



Better for the Oceans
Better for Working Conditions
Better for Business

TRANSPARENSEA

Smarter, Easier
EM Compliance



Powered by
 **Anchor Lab**
Copenhagen

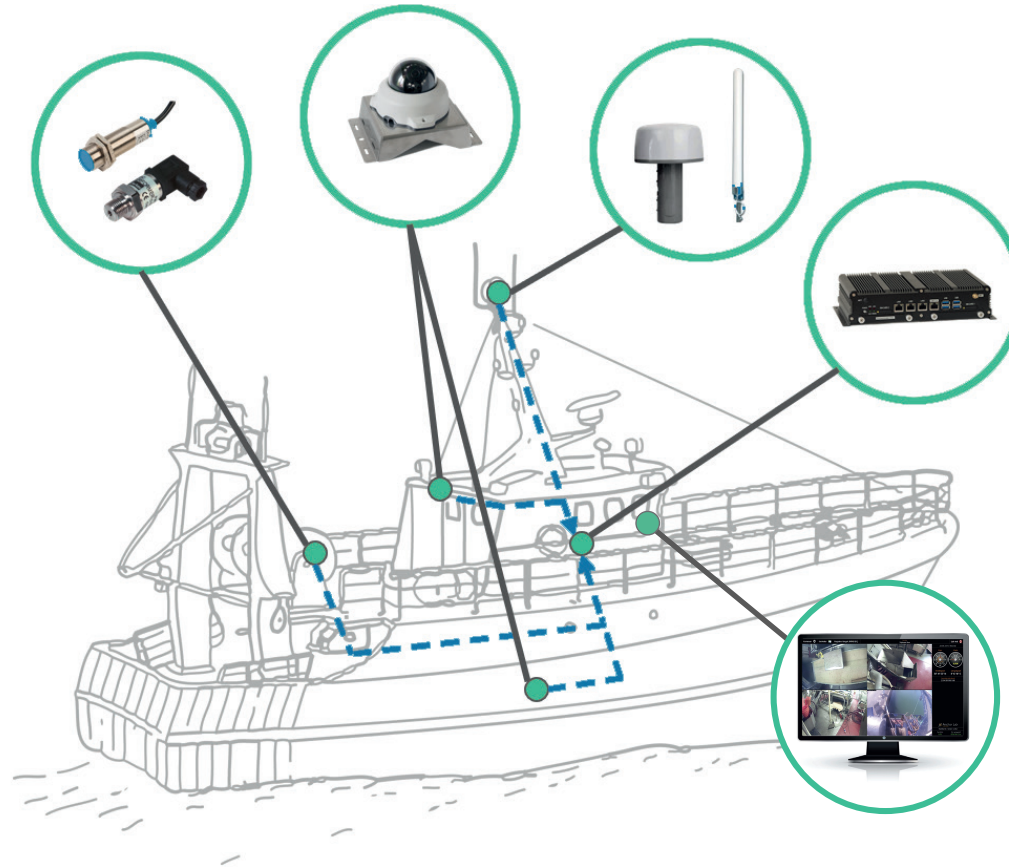
TRANSPARENSEA Integrated Electronic Monitoring

COMPLIANCE MADE EASY:

Transparensa Electronic Monitoring is the newest addition to the CLS suite of regulatory services. It is compatible with our Triton VMS and FishWeb platform, and our world-class support team is always on hand to help. We provide a one stop shop for all your compliance needs, letting you focus on your business.

UNIQUE EXPERTISE:

Transparensa is the first and only EMS solution on the market that provides video analysis by fisheries scientists as well as video technicians, giving you the most accurate insights available.



Fishing authorities in Chile have chosen to adopt EMS because it is the most efficient and transparent tool to comply with their Fisheries Bycatch and Discharge at Sea Reduction Plan.
— Sernapesca

Control Unit	GPS, LTE (3G/4G) & Wi-Fi modules
Antenna	GPS & GSM
4 Fixed Dome IP Cameras	2MP, Remote focus & Vari-focal (2.8 ~ 12 mm) lens & H.265 encoding
PoE Switch	Support for 8 cameras Additional cameras possible
2 Inductive Sensors	Alternative sensors supported (hydraulic, current)
IP Code	IP66/IK10 rated

@ clsfishingteam@groupcls.com | fisheries.groupcls.com



FEATURES



ROBUST & ENCRYPTED DATA

PROTECT AGAINST DATA LOSS
WITH BACKUPS

RUGGEDIZED
MARINE EQUIPMENT

SECURE DATA
TRANSFER



EASIER OPERATIONS

LIVE VIEW: INTERACT WITH
THE SYSTEM REMOTELY
AND SECURELY

SIMPLIFY MAINTENANCE WITH
AUTOMATIC, OVER THE AIR
UPDATES



SMARTER EMS

RECORD ONLY WHAT YOU NEED
(TRIGGERED BY GEOFENCING,
SENSORS, VESSEL BEHAVIOR)

CRITICAL DATA EMBEDDED
IN THE RECORDING:
SAVE TIME & FIND EXACTLY
WHAT YOU WANT

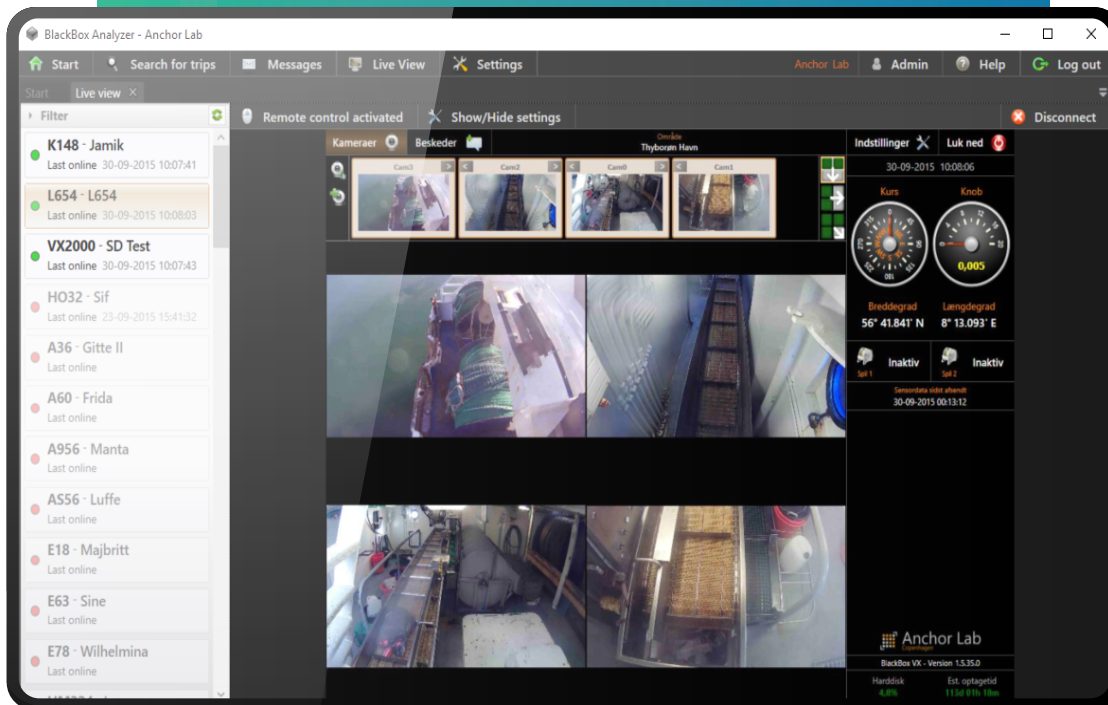


ADVANCED CATCH ANALYSIS

IDENTIFY CATCH COMPOSITION
AND QUANTITY

EMBED MEASUREMENT
METADATA INTO STILL IMAGES
FROM VIDEO

ABILITY TO TAKE PRECISE
MEASUREMENTS OF FISH FROM
2D IMAGES



CLS

CLS (Collection and Localization of Satellite Data) is a worldwide company and has been a pioneer provider of monitoring and surveillance solutions for the Earth since 1986. Our mission is to provide innovative space-based solutions to understand and protect our planet and to manage its resources sustainably. CLS employs 720 people (experts in oceanography, meteorology, fisheries, data science, software and hardware engineering, and operations).

130 satellites
30 Million
positions processed
each day

**WORLDWIDE
NETWORK:** **25** premises
on **5** continents

**CLS FISHERIES:
THE WORLD'S LEADING
VMS & FMC PROVIDER**

25+ years' expertise
14,000 VMS vessels
worldwide
+30 FMCs
Fisheries clients
in over **100** countries



@ clsfishingteam@groupcls.com  fisheries.groupcls.com



POWERED BY
 **Anchor Lab**
Copenhagen

Anchor Lab develops leading edge electronic monitoring solutions to meet the expanding challenges of monitoring global fisheries. From working with a broad range of fisheries control and research agencies, Anchor Lab's electronic monitoring systems have been developed to be customizable and configurable to meet the diverse requirements of individual fisheries. We provide a complete solution from automated data collection tailored to individual vessels, right through to the tools for analyzing fishing activities and onboard procedures.

